

Parts Manual

45-8026

PL30-1027-2

04/21/2011



DOTCO®

10-27 Series Right Angle Grinders & Sanders



Throttle Type	Free Speed (RPM)			Termination	
	3,300	6,000	4,500	200 Collet	5/8"-11 Ext.
Lock-Off Lever	10K2760	10K2761	10K2762	-01	-80
Locking Lever	10L2760	10L2761	10L2762	-01	-80
Push-Pull	10Q2760	10Q2761	10Q2762	-01	-80

For additional product information visit our website at:
[https://dotcotool.com/product-category/dotco-air-tools/dotco-sanders/dotco-right-angle-sanders/
dotco-12-27-10-27-series-right-angle-sanders/](https://dotcotool.com/product-category/dotco-air-tools/dotco-sanders/dotco-right-angle-sanders/dotco-12-27-10-27-series-right-angle-sanders/)

"A"

Motor Assembly

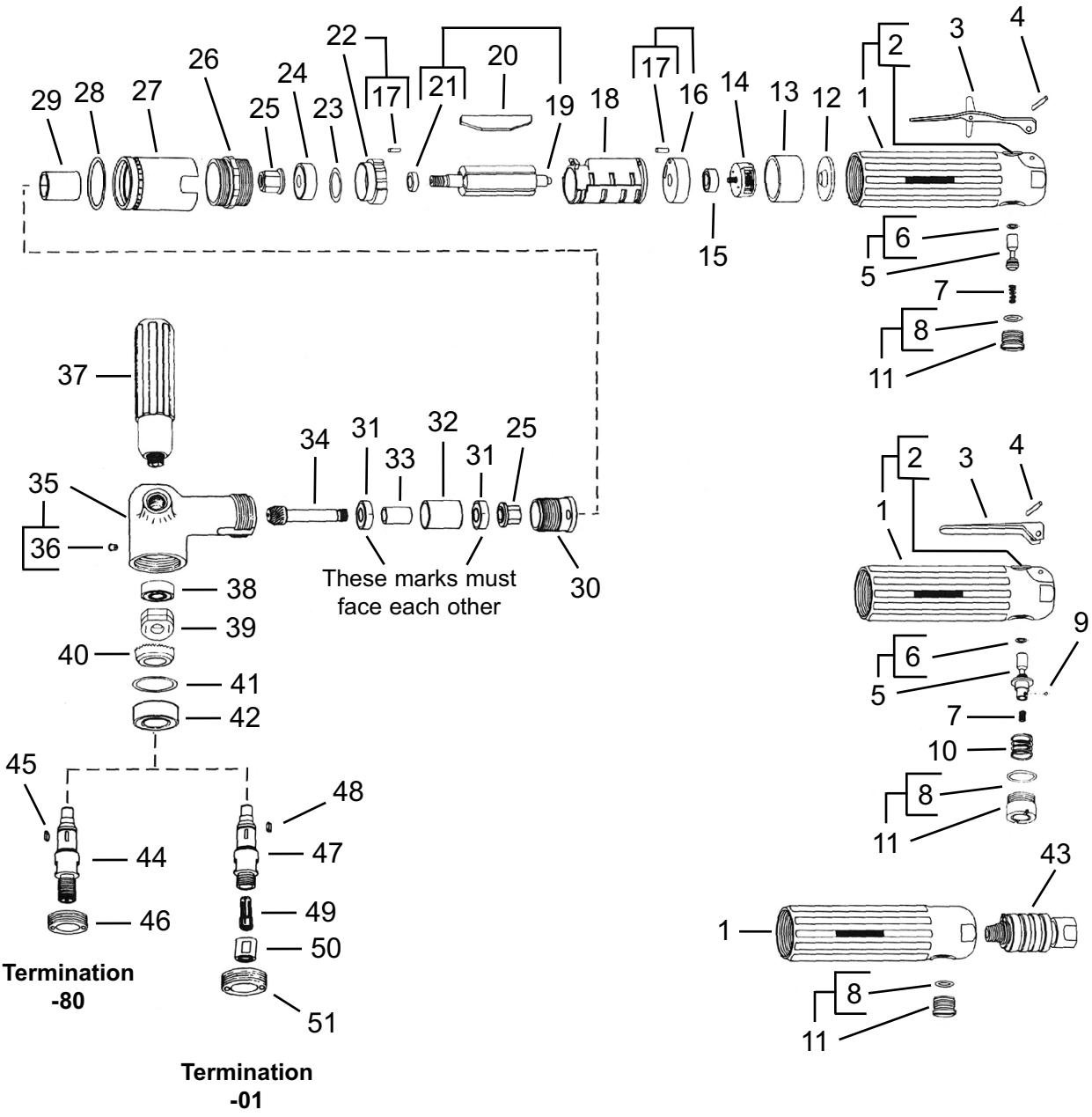


Illustration "A" - Motor Assembly

Ref.	Number	#	●	Kit	EN	DE	FR	ES	IT
					Description	Benennung	Description	Descripción	Descrizione
1	Table A	1			Motor Housing	Motorgehäuse	Cage de moteur	Caja del motor	Corpo motore
2	Table A	1			* Valve Bushing	Lagerbuchse	Douille	Casquillo	Boccola
3	Table A	1			Lever	Hebel	Lever	Palanca	Leva
4	1042	1			Pin	Stift	Goupille cylindrique	Pasador	Spina
5	Table A	1			Valve Stem	Ventilschaft	Tige de soupape	Vástago de válvula	Asta valvola
6	2053	1			O-Ring	O-Ring	Joint torique	Anillo "O"	Anello ad O
7	2015	1			Valve Spring	Ventilfeder	Printemps de soupape	La Primavera de la válvula	Primavera di valvola
8	1057	1			O-Ring	O-Ring	Joint torique	Anillo "O"	Anello ad O
9	4180	2			Ball	Kugel	Bille	Bolas	Sfera
10	2413	1			Spring	Druckfeder	Ressort	Resorte	Molla
11	Table A	1			Plug Assembly	Montage	Assemblage	Ensamblaje	Assemblaggio
12	2937	1			Nozzle	Düse	Bec	Boquilla	Ugello
13	2936	1			Adapter	Zwischenstück	Adaptateur	Adaptador	Adattatore
14	Table A1	1			Governor Module	Modul	Module	Módulo	Modulo
15	555	1			Ball Bearing	Kugellager	Roulement à billes	Cojinete de bolas	Cuscinetto a sfera
16	2945	1			Bearing Plate	Tragplatte	Plaque de support	Placa de asiento	Piattello cuscinetto
17	1041	2			Locating Pin	Stift	Goupille cylindrique	Pasador	Spina
18	2255	1			Cylinder	Zylinder	Cylindre	Cilindro	Cilindro
19	7941	1			Rotor	Rotor	Rotor	El rotor	Il rotore
20	2906	4			Rotor Blade	Rotorblatt	Palette	Alabe del rotor	Paletta del rotore
21	2017	1			Spacer	Distanzstück	Entretoise	Espaciador	Distanziale
22	2292	1			Bearing Plate	Tragplatte	Plaque de support	Placa de asiento	Piattello cuscinetto
23	2488	1			Shim Packet	Satz	Ensemble	Juego	Corredo
24	500	1			Ball Bearing	Kugellager	Roulement à billes	Cojinete de bolas	Cuscinetto a sfera
25	2284	2			Drive Coupling	Kupplung	Couplage	Acoplamiento	Accoppiamento
26	2043	1			Lock Ring	Verschlussring	Bague de verrouillage	Anillo de cierre	Anello di bloccaggio
27	7907	1			Cap	Kappe	Chapeau	Tapa	Cappello
28	1169	1			O-Ring	O-Ring	Joint torique	Anillo "O"	Anello ad O
29	2287	1			Coupling	Kupplung	Couplage	Acoplamiento	Accoppiamento
30	2252	1			Lock Ring	Verschlussring	Bague de verrouillage	Anillo de cierre	Anello di bloccaggio
31	534	1			Duplex Bearing	Lager	Coussinet	Cojinete	Cuscinetto
32	2237	1			Spacer	Distanzstück	Entretoise	Espaciador	Distanziale
33	2242	1			Spacer	Distanzstück	Entretoise	Espaciador	Distanziale
34	Table A1	1			Pinion	Pinion	Pignon	Piñón	Il pignone
35	2538	1			Angle Housing	Winkelkopfgehäuse	Cage d'équerre	Alojamiento angular	Corpo testina angolare
36	1463	1			Grease Fitting	Schmiernippel	Monture de graisse	Accesorio de grasa	Ingrassatore
37	7678	1			Handle	Handgriff	Poignée	Manija	Impugnatura
38	505	1			Ball Bearing	Kugellager	Roulement à billes	Cojinete de bolas	Cuscinetto a sfera
39	7755	1			Lubricator Disc				
40	Table A1	1			Pinion Gear	Ritzelgetriebe	Pignon d'entraînement	Piñon diferencial	Ingranaggio a pignone
41	2645	1			Shim Packet	Satz	Ensemble	Juego	Corredo
42	543	1			Ball Bearing	Kugellager	Roulement à billes	Cojinete de bolas	Cuscinetto a sfera
43	14-2209	1			Sleeve Valve	Ventil	Soupape	Válvula	Valvola

Illustration "A" - Motor Assembly (continued)

Ref.	Number	#	●	Kit	EN	DE	FR	ES	IT
					Description	Benennung	Description	Descripción	Descrizione
Termination -80:									
44	2541	1			Spindle	Spindel	Arbre	Husillo	Mandrino
45	2062	1			Woodruff Key	Woodruff Schluessel	Clavette Woodruff	Llave Woodruff	Chiavetta woodruff
46	2542	1			Lock Ring	Verschlußring	Bague de verrouillage	Anillo de cierre	Anello di bloccaggio
Termination -01:									
47	2666	1			Spindle	Spindel	Arbre	Husillo	Mandrino
48	2062	1			Woodruff Key	Woodruff Schluessel	Clavette Woodruff	Llave Woodruff	Chiavetta woodruff
49	Table A2	1			Collet	Futter	Douille de serrage	Boquilla	Bussola di chiusura
50	2058	1			Cap	Kappe	Chapeau	Tapa	Cappello
51	2542	1			Lock Ring	Verschlußring	Bague de verrouillage	Anillo de cierre	Anello di bloccaggio
Not Shown:									
--	45-1982	1			Grease Gun				
--	45-0980	1			Gear Lube	Zahnrad-Schmieröl	Lubrifiant De Vitesse	Lubricante Del Engranaje	Olio lubrificante Dell'Ingranaggio

(#) Quantity / Stückzahl / Quantité / Cantidad / Quantità

- * Note: If necessary to replace valve bushing, press bushing, beveled end first, into threaded end of crosshole of motor housing. The valve bushing base should be .785" plus .005" from counterbored shoulder of crosshole. Hone inside diameter of valve bushing to .3129" plus .0003" diameter.

Table "A"

Ref.	Description	Qty.	10K2760	Qty.	10L2760	Qty.	10Q2760
			10K2761		10L2762		10Q2762
			10K2762		10L2763		10Q2763
1	Motor Housing	1	2938	1	2938	1	2950
2	Valve Bushing	1	2007	1	2007		---
3	Lever	1	1019	1	01-1267		---
5	Valve Stem	1	2412	1	2008		---
11	Plug Assembly	1	2411	1	2734	1	2734

Table "A1"

Ref.	Description	Qty.	10-2760	Qty.	10-2761	Qty.	10-2762
14	Governor Module	1	2933	1	2939	1	2708
34	Pinion	1	2646	1	2667	1	2646
40	Pinion Gear	1	2647	1	2668	1	2647

Table "A2"

200 Series Optional Collets					
Part No.	Arbor Size	Part No.	Arbor Size	Part No.	Arbor Size
204	1/8"	208 *	1/4"	212	3/8"
205	5/32"	209	9/32"	213	6mm
206	3/16"	210	5/16"	216	8mm
207	7/32"	211	11/32"		

* Standard Collet

Sales & Service Centers

Note: All locations may not service all products. Please contact the nearest Sales & Service Center for the appropriate facility to handle your service requirements.

Dallas, TX
**Apex Tool Group
Sales & Service Center**
1470 Post & Paddock
Grand Prairie, TX 75050
Tel: 972-641-9563
Fax: 972-641-9674

Detroit, MI
**Apex Tool Group
Sales & Service Center**
2630 Superior Court
Auburn Hills, MI 48326
Tel: 248-391-3700
Fax: 248-391-7824

Houston, TX
**Apex Tool Group
Sales & Service Center**
6550 West Sam Houston
Parkway North, Suite 200
Houston, TX 77041
Tel: 713-849-2364
Fax: 713-849-2047

Lexington, SC
Apex Tool Group
670 Industrial Drive
Lexington, SC 29072
Tel: 800-845-5629
Tel: 803-951-7544
Fax: 803-358-7681

Los Angeles, CA
**Apex Tool Group
Sales & Service Center**
15503 Blackburn Avenue
Norwalk, CA 90650
Tel: 562-623-4457
Fax: 562-802-1718

Seattle, WA
**Apex Tool Group
Sales & Service Center**
2865 152nd Avenue N.E.
Redmond, WA 98052
Tel: 425-497-0476
Fax: 425-497-0496

York, PA
**Apex Tool Group
Sales & Service Center**
3990 East Market Street
York, PA 17402
Tel: 717-755-2933
Fax: 717-757-5063

Canada
**Apex Tool Group
Sales & Service Center**
5925 McLaughlin Road
Mississauga, Ont. L5R 1B8
Canada
Tel: 905-501-4785
Fax: 905-501-4786

Germany
Cooper Power Tools
GmbH & Co. OHG
a company of
Apex Tool Group, LLC
Industriestraße 1
73463 Westhausen
Germany
Tel: +49 (0) 73 63 81 0
Fax: +49 (0) 73 63 81 222

England
Cooper Power Tools
GmbH & Co. OHG
a company of
Apex Tool Group, LLC
C/O Spline Gauges
Piccadilly, Tamworth
Staffordshire B78 2ER
United Kingdom
Tel: +44 1827 8741 28
Fax: +44 1827 8741 28

France
Cooper Power Tools SAS
a company of
Apex Tool Group, LLC
25 rue Maurice Chevalier
77330 Ozoir-La-Ferrière
France
Tel: +33 1 6443 2200
Fax: +33 1 6443 1717

China
Cooper (China) Co., Ltd.
a company of
Apex Tool Group, LLC
955 Sheng Li Road,
Heqing Pudong, Shanghai
China 201201
Tel: +86-21-28994176
Fax: +86-21-51118446

Mexico
Cooper Tools
de México S.A. de C.V.
a company of
Apex Tool Group, LLC
Vialidad El Pueblito #103
Parque Industrial Querétaro
Querétaro, QRO 76220
Mexico
Tel: +52 (442) 211-3800
Fax: +52 (442) 103-0443

Brazil
Cooper Tools Industrial Ltda.
a company of
Apex Tool Group, LLC
Av. Liberdade, 4055
Zona Industrial - Iporanga
SP Brazil
Tel: +55 15 2383929
Fax: +55 15 2383260

Hungary
Cooper Tools Hungaria Kft.
a company of
Apex Tool Group, LLC
Berkenyefa sor 7
Pf: 640
9027 Győr
Hungary
Tel: +36 96 66 1383
Fax: +36 96 66 1135

Apex Tool Group, LLC
1000 Lufkin Road
Apex, NC 27539
Phone: 919-387-0099
Fax: 919-387-2614
www.apextoolgroup.com

DOTCO®