

Parts Manual

45-8010

PL30-1020

04/21/2011



DOTCO[®]

10-20 Series
Heavy Duty Grinders & Drills



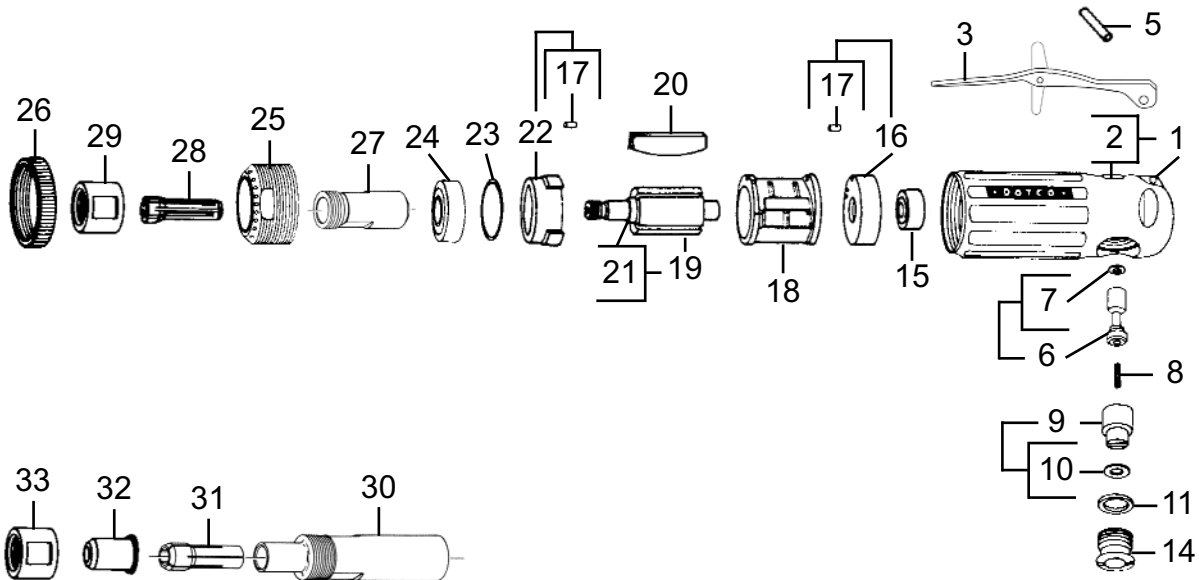
Throttle Type	Free Speed (RPM)			Terminations			
	Grinders		Drills	Grinders		Drills	
	25,000	20,000	25,000	200 Collet	300 Collet	5/32" Chuck	1/4" Chuck
Button	10B2000	10B2005	15B2000	-01	-36	-37	-38
Lock-Off Lever	10K2000	10K2005	15K2000	-01	-36	-37	-38
Locking Lever	10L2000	10L2005	15L2000	-01	-36	-37	-38
Locking Lever	10S2000	10S2005	15S2000	-01	-36	-37	-38

For additional product information visit our website at <https://dotcotool.com/product-category/dotco-air-tools/dotco-grinders/dotco-inline-grinders/dotco-10-20-series-inline-grinders/>

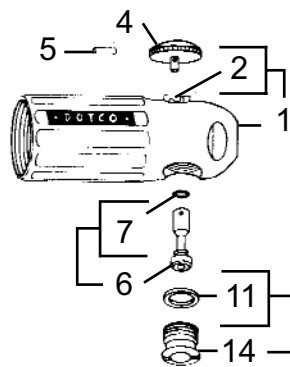
DOTCO Description

"A"

"L" & "S" Latching Lever Throttle



"B" Button Throttle



"K" Lock Off Lever Throttle

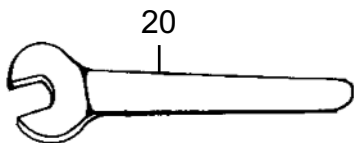
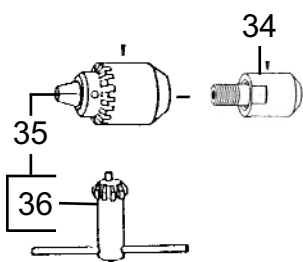
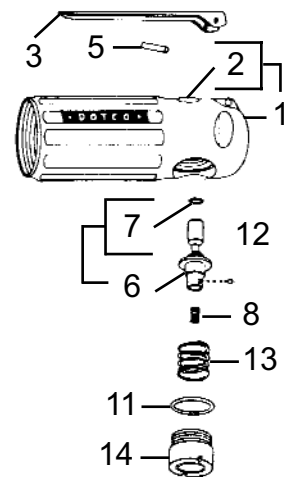


Illustration "A" - Heavy Duty Grinders

Ref.	Number	#	●	Kit	EN	DE	FR	ES	IT
					Description	Benennung	Description	Descripción	Descrizione
1	Table A	1			Motor Housing	Motorgehäuse	Cage de moteur	Caja del motor	Corpo motore
2	Table A	1		K1	* Valve Bushing	Lagerbuchse	Douille	Casquillo	Boccola
3	Table A	1		K1	Lever	Hebel	Lever	Palanca	Leva
4	1039	1		K1	Button	Drucktaste	Bouton	Botón	Pulsante
5	Table A	1		K1	Pin	Stift	Goupille cylindrique	Pasador	Spina
6	Table A	1		K1	Valve Stem	Ventilschaft	Tige de soupape	Vástago de válvula	Asta valvola
7	2053	1		K1	O-Ring	O-Ring	Joint torique	Anillo "O"	Anello ad O
8	2015	1		K1	Valve Spring	Ventilfeder	Printemps de soupape	La Primavera de la válvula	Primavera di valvola
9	2011	1		K1	Speed Regulator	Regler	Régulateur	Regulador	Regolatore
10	1056	1		K1	O-Ring	O-Ring	Joint torique	Anillo "O"	Anello ad O
11	1057	1		K1	O-Ring	O-Ring	Joint torique	Anillo "O"	Anello ad O
12	4180	2		K1	Ball	Kugel	Bille	Bolas	Sfera
13	2413	1		K1	Spring	Druckfeder	Ressort	Resorte	Molla
14	Table A	1		K1	Plug Assembly	Buchse	Bouchon	Tapón	Spina
15	538	1		K2	Ball Bearing	Kugellager	Roulement à billes	Cojinete de bolas	Cuscinetto a sfera
16	7003	1			Bearing Plate	Tragplatte	Plaque de support	Placa de asiento	Piattello cuscinetto
17	1041	2		K2	Locating Pin	Stift	Goupille cylindrique	Pasador	Spina
18	2002	1			Cylinder	Zylinder	Cylindre	Cilindro	Cilindro
19	7005	1			Rotor	Rotor	Rotor	El rotor	Il rotore
20	Table A1	--		K2	Rotor Blade	Rotorblatt	Palette	Alabe del rotor	Paletta del rotore
21	2017	1		K2	Spacer	Distanzstück	Entretoise	Espaciador	Distanziale
22	2256	1			Bearing Plate	Tragplatte	Plaque de support	Placa de asiento	Piattello cuscinetto
23	2488	1		K2	Shim Packet	Unterlegstück	Cale pelable	Calzo	Spessore
24	500	1		K2	Ball Bearing	Kugellager	Roulement à billes	Cojinete de bolas	Cuscinetto a sfera
25	Table A1	1			** Lock Ring	Verschlussring	Bague de verrouillage	Anillo de cierre	Anello di bloccaggio
26	2585	1		K3/4	Guard	Schutzvorrichtung	Protection	Guarda	Protezione
Termination 01:									
27	2054	1			Collet Chuck Body	Futter Körper	Corps de trou	Bote el Cuerpo	Il Corpo di ciottolo
28	Table A2	1			Collet	Futter	Douille de serrage	Boquilla	Bussola di chiusura
29	2058	1		K3	Collet Chuck Cap	Kappe	Chapeau	Tapa	Cappello
Termination 36:									
30	1400	1			Collet Chuck Body	Futter Körper	Corps de trou	Bote el Cuerpo	Il Corpo di ciottolo
31	Table A2	1			Collet	Futter	Douille de serrage	Boquilla	Bussola di chiusura
32	1053	1		K4	Nosepiece	Kopfstück	Tuyère	Tobera	Naso
33	1058	1		K4	Collet Chuck Cap	Kappe	Chapeau	Tapa	Cappello
Terminations 37:									
34	14-2190	1			Adapter	Zwischenstück	Adaptateur	Adaptador	Adattatore
35	1075	1			Drill Chuck (5/32")	Bohren Sie Futter	Trou d'exercice	El taladro Bota	Trapanare il Ciottolo
36	620	1			Chuck Key	Schlüssel	Clavette	Llave	Chiave
Terminations 38:									
34	14-2133	1			Adapter	Zwischenstück	Adaptateur	Adaptador	Adattatore
35	14-1485	1			Drill Chuck (1/4")	Bohren Sie Futter	Trou d'exercice	El taladro Bota	Trapanare il Ciottolo
36	621	1			Chuck Key	Schlüssel	Clavette	Llave	Chiave
Wrenches:									
37	14-0809	1			Wrench (9/16") -01	Schraubenschlüssel	Clé plate	La llave	La chiave
	14-0812	1			Wrench (3/4") -01	Schraubenschlüssel	Clé plate	La llave	La chiave
	14-0807	1			Wrench (7/16") -36	Schraubenschlüssel	Clé plate	La llave	La chiave
	14-0811	1			Wrench (11/16") -36	Schraubenschlüssel	Clé plate	La llave	La chiave

DOTCO Description

Continued Illustration "A" - Heavy Duty Grinders

Ref.	Number	#	●	Kit	EN	DE	FR	ES	IT
					Description	Benennung	Description	Descripción	Descrizione
Repair Kits:									
K1	Table A	1			Throttle Kit	Satz	Ensemble	Juego	Corredo
K2	Table A1	1			Motor Kit	Satz	Ensemble	Juego	Corredo
K3	04-0094	1			Output Kit	Satz	Ensemble	Juego	Corredo
K4	04-0093	1			Output Kit	Satz	Ensemble	Juego	Corredo

(#) Quantity / Stückzahl / Quantité / Cantidad / Quantità

- * Note: If necessary to replace valve bushing, press bushing, beveled end first, into threaded end of crosshole of motor housing. The valve bushing base should be .562" plus .005" from counterbored shoulder of crosshole. Hone inside diameter of valve bushing to .2509" plus .0003" diameter.

Table "A"

Ref.	Description	Qty.	10B2000	Qty.	10K2000	Qty.	10(L)(S)2000
			10B2005		10K2005		10(L)(S)2005
			15B2000				15(L)(S)2000
1	Motor Housing	1	2051	1	2001	1	2001
2	Valve Bushing	1	2037	1	2007	1	2007
3	Lever		---	1	1019	1	01-1267
5	Pin	1	1055	1	1042	1	1042
6	Valve Stem	1	2038	1	2412	1	2008
14	Plug Assembly	1	2012	1	2411	1	2012
K1	Throttle Kit	1	04-0089	1	04-0087	1	04-0088

Table "A1"

Ref.	Description	Qty.	10B2000	Qty.	10B2005	Qty.	15B2000
			10K2000		10K2005		15K2000
			10L2000				15L2000
			10S2000				15S2000
20	Rotor Blade	4	2006	4	2406	4	2006
25	Lock Ring	1	2014	1	7085	1	2014
K2	Motor Kit	1	04-0091	1	04-0092	1	04-0091

* Note: Rotor Blade Kits contain 50 pieces

Table "A2"

200 Series Optional Collets					
Part No.	Arbor Size	Part No.	Arbor Size	Part No.	Arbor Size
204	1/8"	208 *	1/4"	212	3/8"
205	5/32"	209	9/32"	213	6mm
206	3/16"	210	5/16"	216	8mm
207	7/32"	211	11/32"		
300 Series Optional Collets					
Part No.	Arbor Size	Part No.	Arbor Size	Part No.	Arbor Size
301	3/64"	305	5/32"	310	6mm
302	5/64"	306	3/16"		
303	3/32"	307	7/32"		
304	1/8"	308 *	1/4"		

* Standard Collet