

Parts Manual
45-8016
PL30-1025-2
05/17/2011

OMEGA TECHNOLOGIES

DOTCO®

**10-25 Series
Heavy Duty Grinders**

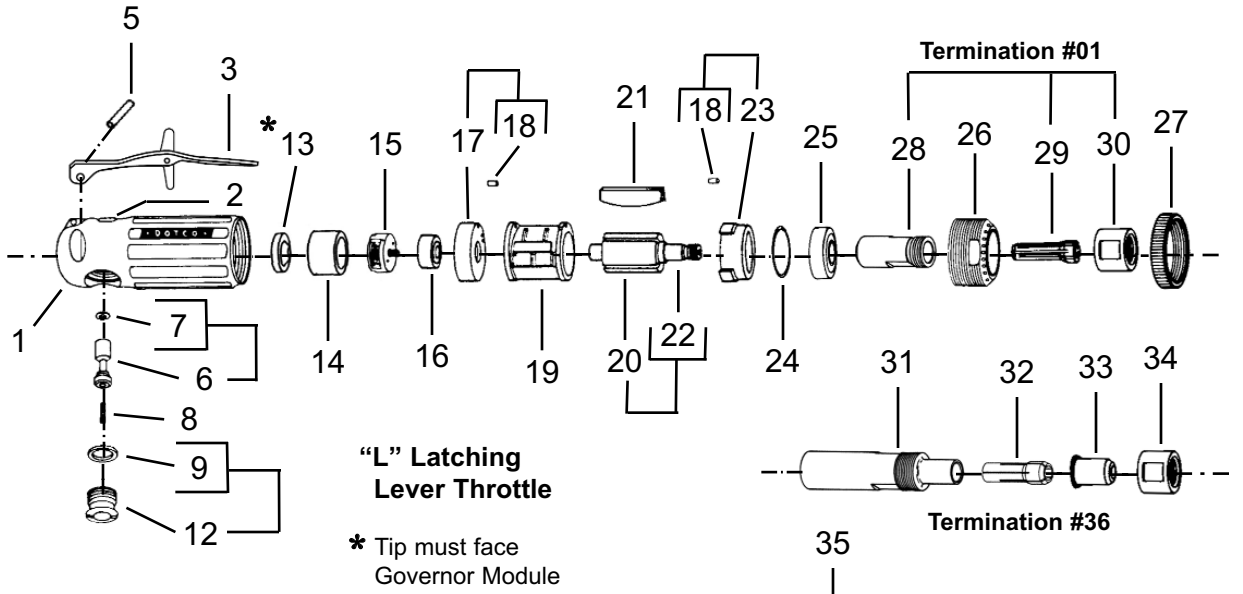


Throttle Type	Free Speed (RPM)			Terminations				
	12,000	15,000	18,000	200 Collet	300 Collet	External Thread	Cone & Plug Wheel	Type 1 Wheel
Button	10B2562	10B2565	10B2568	-01	-36	-40	-77	-13,-16,-17
Lock-Off	10K2562	10K2565	10K2568	-01	-36	-40	-77	-13,-16,-17
Latching	10L2562	10L2565	10L2568	-01	-36	-40	-77	-13,-16,-17

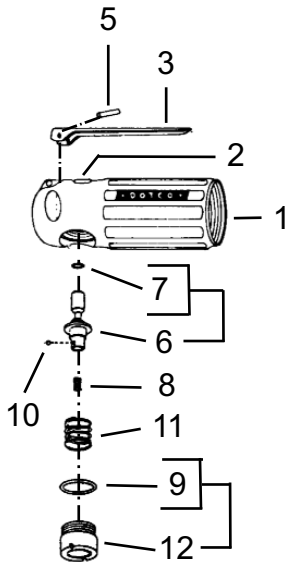
For additional product information visit our website at <https://dotcotool.com/product-category/dotco-air-tools/dotco-grinders/dotco-inline-grinders/dotco-10-25-series-inline-grinders/>

"A"

Ultra-Heavy Duty Governor Controlled Grinder Assembly



"K" Lock-Off Lever Throttle



"B" Button Throttle

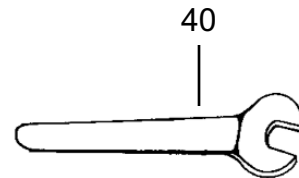
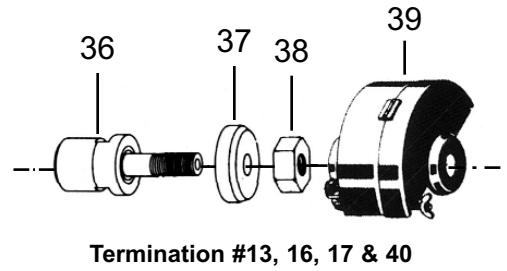
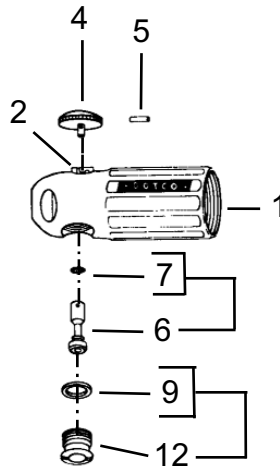


Illustration "A" - Ultra Heavy-Duty Pneumatic Grinder Assembly

Ref.	Number	#	●	Kit	EN	DE	FR	ES	IT
					Description	Benennung	Description	Descripción	Descrizione
1	Table A	1			Motor Housing	Motorgehäuse	Cage de moteur	Caja del motor	Corpo motore
2	Table A	1			* Valve Bushing	Lagerbuchse	Douille	Casquillo	Boccola
3	Table A	1			Lever	Hebel	Lavier	Palanca	Leva
4	1039	1			Button	Drucktaste	Bouton	Botón	Pulsante
5	Table A	1			Pin	Stift	Goupille cylindrique	Pasador	Spina
6	Table A	1			Valve Stem	Ventilschaft	Tige de soupape	Vástago de válvula	Asta valvola
7	2053	1			O-Ring	O-Ring	Joint torique	Anillo "O"	Anello ad O
8	2015	1			Valve Spring	Ventilfeder	Printemps de soupape	La Primavera de la válvula	Primavera di valvola
9	1057	1			O-Ring	O-Ring	Joint torique	Anillo "O"	Anello ad O
10	4180	2			Ball	Kugel	Bille	Bolas	Sfera
11	2413	1			Spring	Druckfeder	Ressort	Resorte	Molla
12	Table A	1			Plug Assembly	Montage	Assemblage	Ensamblaje	Assemblaggio
13	2937	1			Nozzle	Düse	Bec	Boquilla	Ugello
14	2936	1			Adapter	Zwischenstück	Adaptateur	Adaptador	Adattatore
15	Table A1	1			Governor	Regler	Régulateur	Regulador	Regolatore
16	555	1			Ball Bearing	Kugellager	Roulement à billes	Cojinete de bolas	Cuscinetto a sfera
17	2945	1			Bearing Plate	Tragplatte	Plaque de support	Placa de asiento	Piattello cuscinetto
18	1041	2			Locating Pin	Stift	Goupille cylindrique	Pasador	Spina
19	2255	1			Cylinder	Zylinder	Cylindre	Cilindro	Cilindro
20	7941	1			Rotor	Rotor	Rotor	El rotor	Il rotore
21	2906	4			Rotor Blade	Rotorblatt	Palette	Alabe del rotor	Paletta del rotore
22	2017	1			Spacer	Distanzstück	Entretoise	Espaciador	Distanziale
23	2256	1			Bearing Plate	Tragplatte	Plaque de support	Placa de asiento	Piattello cuscinetto
24	2488	1			Shim Packet	Unterlegstück	Cale pelable	Calzo	Spessore
25	500	1			Ball Bearing	Kugellager	Roulement à billes	Cojinete de bolas	Cuscinetto a sfera
26	Table A1	1			Lock Ring	Verschlussring	Bague de verrouillage	Anillo de cierre	Anello di bloccaggio
27	2585	1			Guard	Schutzvorrichtung	Protection	Guarda	Protezione
Termination 01:									
28	2054	1			Collet Chuck Body	Futtergehäuse	Corps de douille de serrage	Cuerpo de la boquilla	Corpo bussola di chiusura
29	Table A2	1			Collet (200 series)	Futter	Douille de serrage	Boquilla	Bussola di chiusura
30	2058	1			Collet Chuck Cap	Kappe	Chapeau	Tapa	Cappello
Termination 36:									
31	1400	1			Collet Chuck Body	Futtergehäuse	Corps de douille de serrage	Cuerpo de la boquilla	Corpo bussola di chiusura
32	Table A2	1			Collet (300 series)	Futter	Douille de serrage	Boquilla	Bussola di chiusura
33	1053	1			Nosepiece	Kopfstück	Tuyère	Tobera	Naso
34	1058	1			Collet Chuck Cap	Kappe	Chapeau	Tapa	Cappello
Termination 77:									
35	7525	1			Arbor	Dorn	axe	cenador	supporto conico
Termination 40:									
36	2228	1			Spindle	Spindel	Arbre	Husillo	Mandrino
37	14-4000	2			Flange	Flansch	Rebord	Pestaña	Flangia
38	2057	1			Nut	Mutter	Ecrou	Tuerca	Dado
Termination 13:									
36	7649	1			Adapter	Zwischenstück	Adaptateur	Adaptador	Adattatore
37	7653	1			Flange	Flansch	Rebord	Pestaña	Flangia
38	1573	1			Nut	Mutter	Ecrou	Tuerca	Dado
39	14-2559	1			Guard (2")	Schutzvorrichtung	Protection	Guarda	Protezione

Ultra Heavy-Duty Pneumatic Grinder Assembly Parts List: *continued on next page.*

Ultra-Heavy Duty Governor Controlled Grinders

Illustration "A" - Ultra Heavy-Duty Pneumatic Grinder Assembly: *continued from previous page.*

Ref.	Number	#	•	Kit	EN	DE	FR	ES	IT
					Description	Benennung	Description	Descripción	Descrizione
Termination 16:									
36	7577	1			Adapter	Zwischenstück	Adaptateur	Adaptador	Adattatore
37	14-3052	1			Flange	Flansch	Rebord	Pestafía	Flangia
38	2057	1			Nut	Mutter	Ecrou	Tuerca	Dado
39	14-2551	1			Guard (3")	Schutzvorrichtung	Protection	Guarda	Protezione
Termination 17:									
36	7531	1			Adapter	Zwischenstück	Adaptateur	Adaptador	Adattatore
37	14-3056	1			Flange	Flansch	Rebord	Pestafía	Flangia
38	14-4073	1			Nut	Mutter	Ecrou	Tuerca	Dado
39	14-2551	1			Guard (3")	Schutzvorrichtung	Protection	Guarda	Protezione
Wrenches:									
40	14-0807	1			Wrench (7/16") -13,-36	Schraubenschlüssel	Clé plate	La llave	La chiave
	14-0808	1			Wrench (1/2") -77	Schraubenschlüssel	Clé plate	La llave	La chiave
	14-0809	1			Wrench (9/16") 01,16,40	Schraubenschlüssel	Clé plate	La llave	La chiave
	14-0810	1			Wrench (5/8") -13	Schraubenschlüssel	Clé plate	La llave	La chiave
	14-0811	1			Wrench (11/16") -36	Schraubenschlüssel	Clé plate	La llave	La chiave
	14-0812	1			Wrench (3/4") -01	Schraubenschlüssel	Clé plate	La llave	La chiave
	14-0814	1			Wrench (7/8") -16,-17	Schraubenschlüssel	Clé plate	La llave	La chiave
Parts Not Shown:									
--	2932	1			Plastic Housing Sleeve	Hülse	Douille	Manguito	Manicotto

(#) Quantity / Stückzahl / Quantité / Cantidad / Quantità

* Note: If necessary to replace valve bushing, press bushing, beveled end first, into threaded end of crosshole of motor housing. The valve bushing base should be .785" plus .005" from counterbored shoulder of crosshole. Hone inside diameter of valve bushing to .3129" plus .0003" diameter.

Table "A"

Ref.	Description	Qty.	10B2562	Qty.	10K2562	Qty.	10L2562
			10B2565		10K2565		10L2565
			10B2568		10K2568		10L2568
1	Motor Housing	1	2524	1	2938	1	2938
2	Valve Bushing	1	2037	1	2007	1	2007
3	Lever		---	1	1019	1	01-1267
5	Pin	1	1055	1	1042	1	1042
6	Valve Stem	1	2038	1	2412	1	2008
12	Plug Assembly	1	2734	1	2411	1	2734

Table "A1"

Ref.	Description	Qty.	10B2562	Qty.	10B2565	Qty.	10B2568
			10K2562		10L2565		10K2568
			10L2562		10L2565		10L2568
15	Governor	1	2923	1	2924	1	2925
26	Lock Ring	1	2085	1	2014	1	2014

Table "A2"

200 Series Optional Collets					
Part No.	Arbor Size	Part No.	Arbor Size	Part No.	Arbor Size
204	1/8"	208 *	1/4"	212	3/8"
205	5/32"	209	9/32"	213	6mm
206	3/16"	210	5/16"	216	8mm
207	7/32"	211	11/32"		
300 Series Optional Collets					
Part No.	Arbor Size	Part No.	Arbor Size	Part No.	Arbor Size
301	3/64"	305	5/32"	310	6mm
302	5/64"	306	3/16"		
303	3/32"	307	7/32"		
304	1/8"	308 *	1/4"		

* Standard Collet

Sales & Service Centers

Note: All locations may not service all products. Please contact the nearest Sales & Service Center for the appropriate facility to handle your service requirements.

Dallas, TX
**Apex Tool Group
Sales & Service Center**
1470 Post & Paddock
Grand Prairie, TX 75050
Tel: 972-641-9563
Fax: 972-641-9674

Detroit, MI
**Apex Tool Group
Sales & Service Center**
2630 Superior Court
Auburn Hills, MI 48326
Tel: 248-391-3700
Fax: 248-391-7824

Houston, TX
**Apex Tool Group
Sales & Service Center**
6550 West Sam Houston
Parkway North, Suite 200
Houston, TX 77041
Tel: 713-849-2364
Fax: 713-849-2047

Lexington, SC
Apex Tool Group
670 Industrial Drive
Lexington, SC 29072
Tel: 800-845-5629
Tel: 803-951-7544
Fax: 803-358-7681

Los Angeles, CA
**Apex Tool Group
Sales & Service Center**
15503 Blackburn Avenue
Norwalk, CA 90650
Tel: 562-623-4457
Fax: 562-802-1718

Seattle, WA
**Apex Tool Group
Sales & Service Center**
2865 152nd Avenue N.E.
Redmond, WA 98052
Tel: 425-497-0476
Fax: 425-497-0496

York, PA
**Apex Tool Group
Sales & Service Center**
3990 East Market Street
York, PA 17402
Tel: 717-755-2933
Fax: 717-757-5063

Canada
**Apex Tool Group
Sales & Service Center**
5925 McLaughlin Road
Mississauga, Ont. L5R 1B8
Canada
Tel: 905-501-4785
Fax: 905-501-4786

Germany
Cooper Power Tools
GmbH & Co. OHG
a company of
Apex Tool Group, LLC
Industriestraße 1
73463 Westhausen
Germany
Tel: +49 (0) 73 63 81 0
Fax: +49 (0) 73 63 81 222

England
Cooper Power Tools
GmbH & Co. OHG
a company of
Apex Tool Group, LLC
C/O Spline Gauges
Piccadilly, Tamworth
Staffordshire B78 2ER
United Kingdom
Tel: +44 1827 8741 28
Fax: +44 1827 8741 28

France
Cooper Power Tools SAS
a company of
Apex Tool Group, LLC
25 rue Maurice Chevalier
77330 Ozoir-La-Ferrière
France
Tel: +33 1 6443 2200
Fax: +33 1 6443 1717

China
Cooper (China) Co., Ltd.
a company of
Apex Tool Group, LLC
955 Sheng Li Road,
Heqing Pudong, Shanghai
China 201201
Tel: +86-21-28994176
Fax: +86-21-51118446

Mexico
Cooper Tools
de México S.A. de C.V.
a company of
Apex Tool Group, LLC
Vialidad El Pueblito #103
Parque Industrial Querétaro
Querétaro, QRO 76220
Mexico
Tel: +52 (442) 211-3800
Fax: +52 (442) 103-0443

Brazil
Cooper Tools Industrial Ltda.
a company of
Apex Tool Group, LLC
Av. Liberdade, 4055
Zona Industrial - Iporanga
SP Brazil
Tel: +55 15 2383929
Fax: +55 15 2383260

Hungary
Cooper Tools Hungaria Kft.
a company of
Apex Tool Group, LLC
Berkenyefa sor 7
Pf: 640
9027 Győr
Hungary
Tel: +36 96 66 1383
Fax: +36 96 66 1135

Apex Tool Group, LLC
1000 Lufkin Road
Apex, NC 27539
Phone: 919-387-0099
Fax: 919-387-2614
www.apextoolgroup.com

DOTCO®