

Parts Manual
PL71-21MF-910
04/08/2011

Cleco®

OMEGA TECHNOLOGIES

21MF-910 Series
Non-Reversible Rotary Vane Power Motors

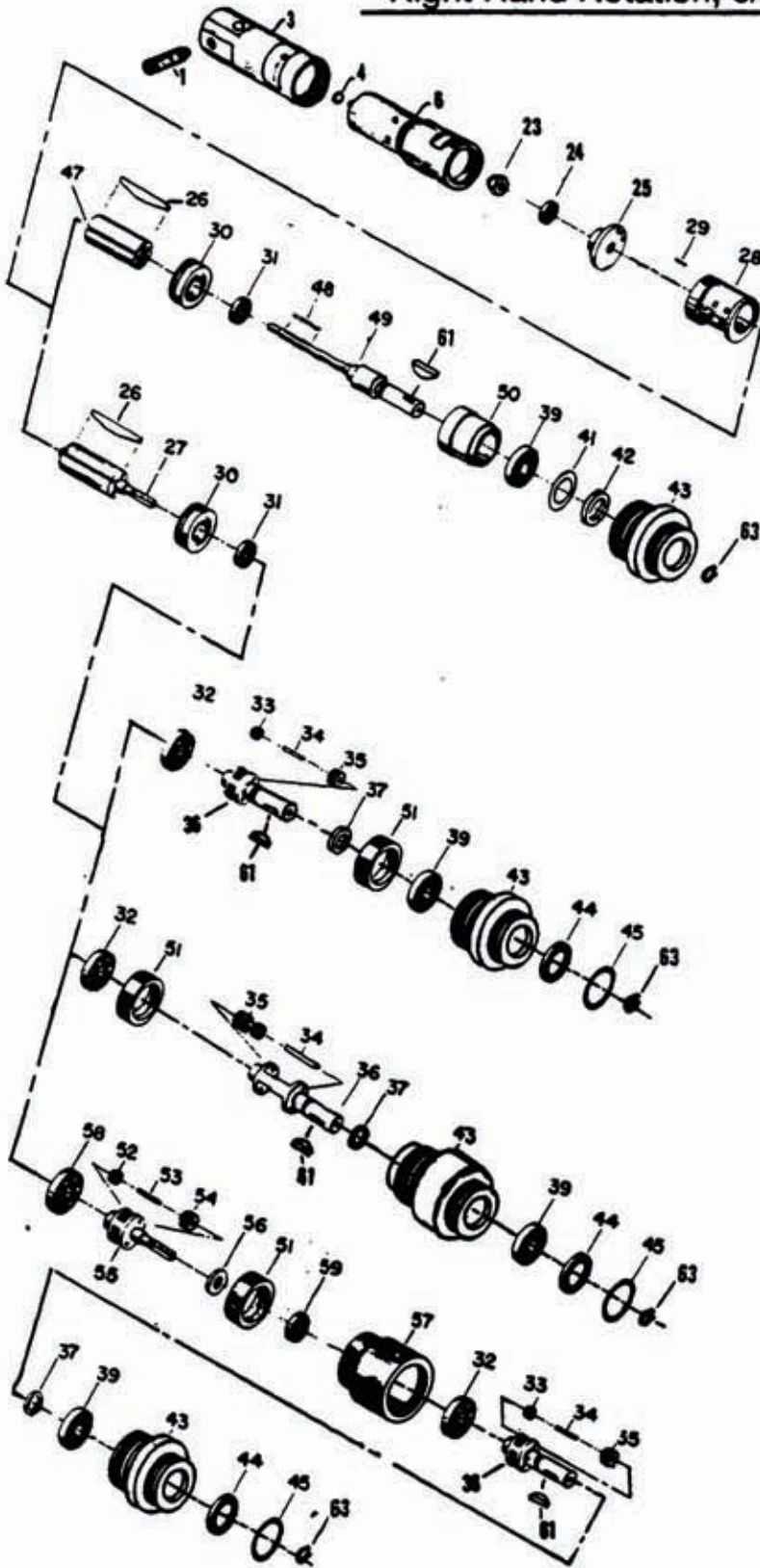


For additional product information visit our website at:
<https://dotcotool.com/product-category/cleco-tools/cleco-air-motors/cleco-21mf-series-rotary-vane-air-motors/>

Cleco®

In-Line Motor Units: 21MF-910 Series
Right Hand Rotation, 3/8" Dia. Keyed Shaft

21MFN910M
 21MFN911M
 21MFN912M
 21MFN913M
 21MFN914M
 21MFN915M
 21MFN916M
 21MFN917M



REF. NO.	PART NO.	DESCRIPTION
1	1015869	Muffer
3	1015624	Rear Head
4	1008680	O-Ring
6	1015648	Motor Housing
23	1012215	Nut
24	1009879	Ball Bearing
25	1008902	Rear Plate
26	1008914	(5) Rotor Blade (21MF-910)
	1008914	(4) Rotor Blade (All Others)
27	1015872	Rotor-9T (21MF-911,15)
	1017518	Rotor-7T (21MF-912,16)
	1017517	Rotor-6T (21MF-913,17)
	1017516	Rotor-5T (21MF-914)
28	1017579	Cylinder (incl: Ref. #29)
29	1008265	Pin
30	1008916	Front Plate
31	1007537	Ball Bearing
32	1005062	Ball Bearing (21MF-911,12,13,14,15,16,17)
33	1008924	(24) Needle Roller (21MF-911,12,13,15,16,17)
34	1008920	(2) Planet Pin (21MF-911,12,13,15,16,17)
	1008977	(2) Planet Pin (21MF-914)
35	1008973	(2) Planet Gear-14T (21MF-911,15,16,17)
	1008968	(2) Planet Gear-17T (21MF-912)
	1008919	(2) Planet Gear-19T (21MF-913)
	1008978	(2) Planet Gear (21MF-914)
36	1015488	Planet Cage (21MF-911,15,16,17)
	1015486	Planet Cage (21MF-912)
	1005487	Planet Cage (21MF-913)
	1015489	Planet Cage (21MF-914)
37	1008972	Planet Cage Washer (21MF-911,15,16,17)
	1008964	Planet Cage Washer (21MF-912,14)
	1008918	Planet Cage Washer (21MF-913)
39	1005062	Ball Bearing (21MF-910)
	1009087	Ball Bearing (21MF-911,12,13,14,15,16,17)
41	1005051	Steel Washer (21MF-910)
42	1005044	Felt Washer (21MF-910)
43	1009079	Nose (21MF-910)
	1019149	Nose & Internal Gear (21MF-911,15,16,17)
	1019156	Nose & Internal Gear (21MF-912)
	1019154	Nose & Internal Gear (21MF-913)
	1019151	Nose & Internal Gear (21MF-914)
44	1019157	Washer (21MF-911,12,13,14,15,16,17)
45	1008859	Retaining Ring (21MF-911,12,13,14,15,16,17)
47	1008981	Rotor (21MF-910)
48	1008983	Pin (21MF-910)
49	1015657	Work Spindle (21MF-910)
50	1008984	Spacer (21MF-910)
51	1008921	Bearing Adapter (21MF-913,14,17)
52	1008924	(24) Planet Roller (21MF-915,16,17)
53	1008920	(2) Planet Pin (21MF-915,16,17)
54	1008973	(2) Planet Gear-14T (21MF-915)
	1008968	(2) Planet Gear-17T (21MF-916)
	1008919	(2) Planet Gear-19T (21MF-917)
55	1008985	Planet Cage (21MF-915)
	1009679	Planet Cage (21MF-916)
	1009681	Planet Cage (21MF-917)
56	1008986	Planet Cage Washer (21MF-915)
	1009680	Planet Cage Washer (21MF-916)
	1009682	Planet Cage Washer (21MF-917)
57	1019146	Gear Housing (21MF-915)
	1019147	Gear Housing (21MF-916)
	1019148	Gear Housing (21MF-917)
58	1005062	Ball Bearing (21MF-915,16,17)
59	1007537	Ball Bearing (21MF-915,16,17)
61	1001473	Woodruff Key
63	1012001	Retaining Ring

SERVICE NOTES

<u>MODEL NO.</u>	<u>FREE SPEED (RPM)</u>	<u>OUTPUT SPINDLE</u>
21MFN910M	24,000	3/8" Dia. Keyed
21MFN911M	4,750	3/8" Dia. Keyed
21MFN912M	3,500	3/8" Dia. Keyed
21MFN913M	2,800	3/8" Dia. Keyed
21MFN914M	2,100	3/8" Dia. Keyed
21MFN915M	900	3/8" Dia. Keyed
21MFN916M	650	3/8" Dia. Keyed
21MFN917M	500	3/8" Dia. Keyed

FEATURES

1" - 20 Left Hand Threaded Nose
Right Hand Spindle Rotation

POWER SOURCE

Requirements: 90 - 100 PSI Air Pressure, 1/4" I.D. Hose
Air Inlet Thread Size: 1/4" NPT

Sales & Service Centers

Note: All locations may not service all products. Please contact the nearest Sales & Service Center for the appropriate facility to handle your service requirements.

Dallas, TX
**Apex Tool Group
Sales & Service Center**
1470 Post & Paddock
Grand Prairie, TX 75050
Tel: 972-641-9563
Fax: 972-641-9674

Detroit, MI
**Apex Tool Group
Sales & Service Center**
2630 Superior Court
Auburn Hills, MI 48326
Tel: 248-391-3700
Fax: 248-391-7824

Houston, TX
**Apex Tool Group
Sales & Service Center**
6550 West Sam Houston
Parkway North, Suite 200
Houston, TX 77041
Tel: 713-849-2364
Fax: 713-849-2047

Lexington, SC
Apex Tool Group
670 Industrial Drive
Lexington, SC 29072
Tel: 800-845-5629
Tel: 803-951-7544
Fax: 803-358-7681

Los Angeles, CA
**Apex Tool Group
Sales & Service Center**
15503 Blackburn Avenue
Norwalk, CA 90650
Tel: 562-623-4457
Fax: 562-802-1718

Seattle, WA
**Apex Tool Group
Sales & Service Center**
2865 152nd Avenue N.E.
Redmond, WA 98052
Tel: 425-497-0476
Fax: 425-497-0496

York, PA
**Apex Tool Group
Sales & Service Center**
3990 East Market Street
York, PA 17402
Tel: 717-755-2933
Fax: 717-757-5063

Canada
**Apex Tool Group
Sales & Service Center**
5925 McLaughlin Road
Mississauga, Ont. L5R 1B8
Canada
Tel: 905-501-4785
Fax: 905-501-4786

Germany
Cooper Power Tools
GmbH & Co. OHG
a company of
Apex Tool Group, LLC
Industriestraße 1
73463 Westhausen
Germany
Tel: +49 (0) 73 63 81 0
Fax: +49 (0) 73 63 81 222

England
Cooper Power Tools
GmbH & Co. OHG
a company of
Apex Tool Group, LLC
C/O Spline Gauges
Piccadilly, Tamworth
Staffordshire B78 2ER
United Kingdom
Tel: +44 1827 8741 28
Fax: +44 1827 8741 28

France
Cooper Power Tools SAS
a company of
Apex Tool Group, LLC
25 rue Maurice Chevalier
77330 Ozoir-La-Ferrière
France
Tel: +33 1 6443 2200
Fax: +33 1 6443 1717

China
Cooper (China) Co., Ltd.
a company of
Apex Tool Group, LLC
955 Sheng Li Road,
Heqing Pudong, Shanghai
China 201201
Tel: +86-21-28994176
Fax: +86-21-51118446

Mexico
Cooper Tools
de México S.A. de C.V.
a company of
Apex Tool Group, LLC
Vialidad El Pueblito #103
Parque Industrial Querétaro
Querétaro, QRO 76220
Mexico
Tel: +52 (442) 211-3800
Fax: +52 (442) 103-0443

Brazil
Cooper Tools Industrial Ltda.
a company of
Apex Tool Group, LLC
Av. Liberdade, 4055
Zona Industrial - Iporanga
SP Brazil
Tel: +55 15 2383929
Fax: +55 15 2383260

Hungary
Cooper Tools Hungaria Kft.
a company of
Apex Tool Group, LLC
Berkenyefa sor 7
Pf: 640
9027 Győr
Hungary
Tel: +36 96 66 1383
Fax: +36 96 66 1135

Apex Tool Group, LLC
1000 Lufkin Road
Apex, NC 27539
Phone: 919-387-0099
Fax: 919-387-2614
www.apextoolgroup.com

Cleco®