

Instruction Manual  
45-8062EN  
07/10/2013

# Cleco®

**OMEGA TECHNOLOGIES**

**22 Series**  
Double Reduction Rotary Vane Power Motors



For additional product information visit our website at:  
<https://dotcotool.com/product-category/cleco-tools/cleco-air-motors/cleco-22-series-side-exhaust-rotary-vane-air-motors/>

## For this Instruction Manual

This Instruction Manual is the Original Instruction Manual intended for all persons who will operate and maintain these tools.

This Instruction Manual

- provides important notes for the safe and efficient use of these tools.
- describes the function and operation of the 22 series tools.
- serves as a reference guide for technical data, service intervals and spare parts ordering.
- provides information on optional equipment.

### Identification text:

22 represents all models of the rotary vane power motor as described in this manual

→ indicates a required action

• indicates a list

<.> indicates a reference number from the exploded parts drawings

**Arial** indicates an important feature or instruction written in **Arial Bold**

### Identification graphic:

→ indicates a directional movement

↓ indicates a function or force

### Copyright protection:

Apex Tool Group, LLC reserves the right to modify, supplement or improve this document or the product without prior notice. This document may not be reproduced in any way, shape or form, in full or parts thereof, or copied to another natural or machine readable language or to a data carrier, whether electronic, mechanical, optical or otherwise without the express permission of Apex Tool Group, LLC.

**Cleco®**  
Nomenclature

**45-8062EN**  
07/10/2013

Rotation Direction	Housing Style	Output Speed - RPM			Exhaust
		430	640	940	
Right	Round	22-5000	22-5001	22-5002	Side
Right	Round	22-5040	22-5041	22-5042	Rear
Right	Flange and Base Mounting	22M5000	22M5001	22M5002	Side
Right	Flange and Base Mounting	22M5040	22M5041	22M5042	Rear
Left *	Round	22D5000-50	22D5001-50	22D5002-50	Side
Left *	Round	22D5040-50	22D5041-50	22D5042-50	Rear
Left *	Flange and Base Mounting	22V5000-50	22V5001-50	22V5002-50	Side
Left *	Flange and Base Mounting	22V5040-50	22V5041-50	22V5042-50	Rear

\* Note: Left hand rotation (not reversible)

<b>1</b>	<b>Safety</b>	<b>6</b>
1.1	Warning and notes.....	6
1.2	Basic requirements for safe working practices .....	6
1.3	Operator training.....	7
1.4	Personal protective equipment .....	7
1.5	Designated use.....	7
1.6	Codes and standards .....	7
1.7	Noise and vibration.....	7
<b>2</b>	<b>Scope of supply, transport and storage</b>	<b>8</b>
2.1	Items supplied .....	8
2.2	Transport .....	8
2.3	Storage.....	8
<b>3</b>	<b>Product description</b>	<b>8</b>
3.1	General description .....	8
3.2	Operation and functional elements.....	8
<b>4</b>	<b>Accessories</b>	<b>9</b>
<b>5</b>	<b>Before initial operation</b>	<b>10</b>
5.1	Ambient conditions .....	10
5.2	Air supply.....	10
5.3	Connecting the air supply to the tool .....	10
5.4	Tool set up .....	10
<b>6</b>	<b>First operation</b>	<b>11</b>
6.1	Putting into use.....	11
<b>7</b>	<b>Troubleshooting</b>	<b>11</b>
<b>8</b>	<b>Maintenance</b>	<b>12</b>
8.1	Service schedule .....	12
8.2	Lubricants .....	12
<b>9</b>	<b>Repair instructions</b>	<b>13</b>

<b>10</b>	<b>Spare parts</b>	<b>14</b>
10.1	22 Series - Side Exhaust .....	14
10.2	22 Series - Rear Exhaust .....	16
10.3	22 Series - Motor Terminations.....	18
<b>11</b>	<b>Technical data</b>	<b>20</b>
11.1	22 Series Specifications .....	20
<b>12</b>	<b>Service</b>	<b>21</b>
12.1	Replacement parts .....	21
12.2	Tool repairs .....	21
12.3	Warranty repairs .....	21
<b>13</b>	<b>Disposal</b>	<b>21</b>

# 1 Safety

## 1.1 Warnings and notes

Warning notes are identified by a signal word and a pictogram.

- The signal word indicates the severity and probability of the impending danger.
- The pictogram indicates the type of danger.

WARNING!



**WARNING** identifies a potentially **hazardous** situation which, if not avoided, may result in serious injury.

CAUTION!



**CAUTION** identifies a potentially **hazardous** situation which, if not avoided, may result in minor or moderate injury or property and environmental damage.

NOTE



**NOTE** identifies general information which may include application tips or useful information but no hazardous situations.



Important information that must be read and understood by all personnel installing, operating or maintaining this equipment.

## 1.2 Basic requirements for safe working practices



All personnel involved with the installation, operation or maintenance of these tools must read and understand all safety instructions contained in this manual. Failure to comply with these instructions could result in serious injury or property damage.

These safety instructions are not intended to be all inclusive. Study and comply with all applicable National, State and Local regulations.

### Work Area:

CAUTION!



- Ensure there is enough space in the work area.
- Keep the work area clean.
- Keep the work area well ventilated.

### Personnel Safety:

- Inspect the air supply hoses and fittings. Do not use damaged, frayed or deteriorated hoses.
- Make sure the air supply hose is securely attached to the tool.
- Install adequate guards for all moving parts of the power motor or it's application.

### Safety working with and around power motors:

- Make sure the motor is securely mounted to the application.
- Make sure the output spindle is fully engaged with the application.
- Disconnect the air supply before servicing the motor

### 1.3 Operator training

All personnel must be properly trained before operating the 22 series tools. The 22 series tools are to be repaired by fully trained personnel only.

### 1.4 Personal protective equipment



When working

- Wear eye protection to protect against flying metal splinters.
- Wear hearing protection

Danger of injury by being caught by moving equipment.



- Wear a hair net
- Do not wear close fitting clothing
- Do not wear jewelry

### 1.5 Designated use

The 22 series are designed exclusively as a power source to be integrated into an application.

- Do not modify the 22 series, any guard or accessory.
- Use only with accessory parts which are approved by the manufacturer.
- Do not use in any improper manner that can cause damage to the motor.

### 1.6 Codes and standards

It is mandatory that all national, state and local codes and standards be followed.

### 1.7 Noise and vibration

No data available on this equipment.

## 2 Scope of supply, transport and storage

### 2.1 Items supplied

Check shipment for transit damage and ensure that all items have been supplied:

- 1 22 series motor
- 1 45-8062EN instruction manual
- 1 Declaration of Conformity (if applicable)
- 1 Lubrication sheet
- 1 Warranty statement

### 2.2 Transport

Transport and store the 22 series in the original packaging. The packaging is recyclable.

### 2.3 Storage

For short term storage (less than 2 hours) and protection against damage:

→ Secure the 22 series to avoid accidental startup.

For storage longer than 2 hours:

→ Disconnect the air supply from the 22 series

Object	Time Period	Storage Temperature
22 Series without air supply	No guideline	-13°F to 104°F (-25°C to 40°C)

## 3 Product description

### 3.1 General description

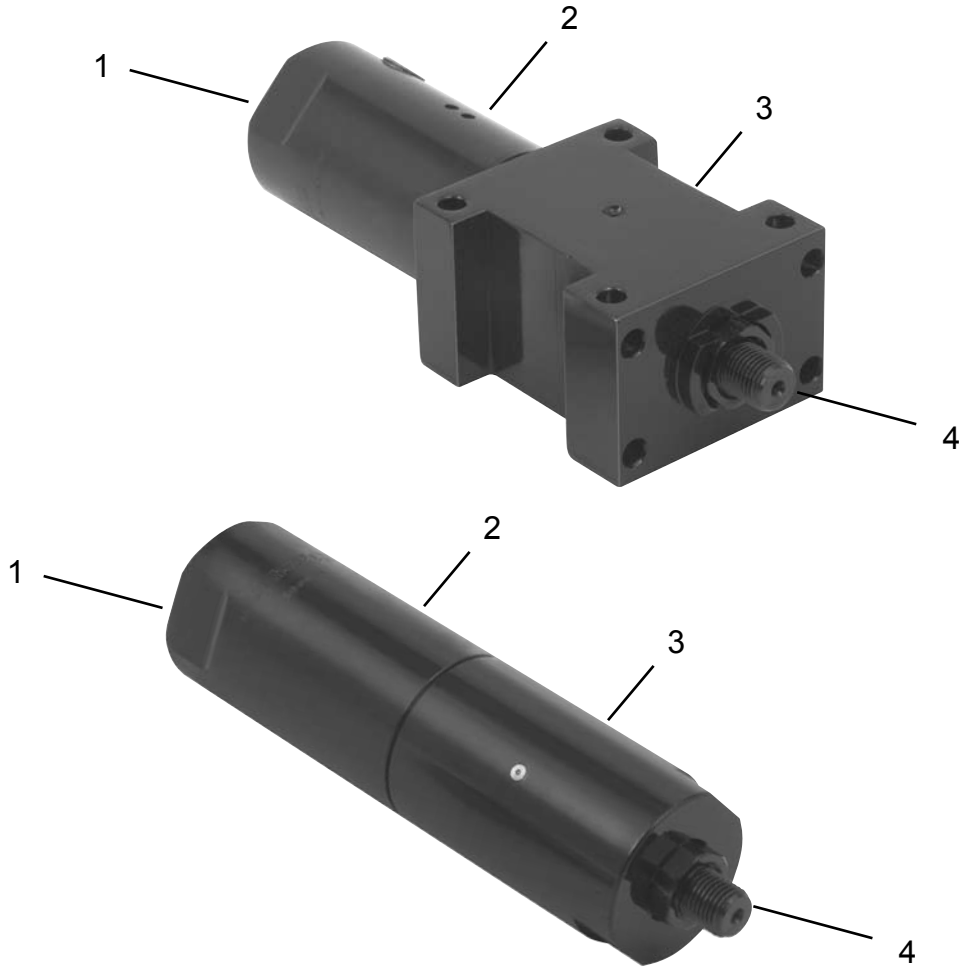
- Pneumatic powered rotary vane power motor
- 0.9 Horsepower
- Double geared
- Round housing or Flange and Base mounting options

### 3.2 Operation and functional elements

This section describes the operational and functional elements of the 22 series.



**3.2 Operation and functional elements (continued)**



Ref.	Description
1	Air Inlet
2	Motor Assembly
3	Gearing Assembly
4	Output Spindle

**4 Accessories**

None listed

## 5 Before initial operation

### 5.1 Ambient conditions

Ambient temperature: 41°F (5°C) to a maximum of 104°F (40°C)

Acceptable relative humidity: 25% to 90%, non-condensing

### 5.2 Air supply

Parameter	Description
Air Hose	Air inlet: 1/4" (6,4 mm) 5/16" I.D. Air Hose: Maximum length run of 10.0' (3 m) 3/8" I.D. Air Hose: Runs over 10.0' (3 m)
Working pressure range	60 to 100 psi (414 to 689 kPa) Recommended: 90 psi (620 kPa)
Compressed air	Air quality according to ISO 8573-1, quality class 2.4.3 The compressed air must be clean and dry.



To attain consistent results, maintain a constant working pressure using a suitable air line unit consisting of a filter, lubricator and regulator.

- The inside diameter of the air hose must be free of residue, clean if necessary.
- If a line lubricator is used, it should be filled daily

### 5.3 Connecting the air supply to the tool

The air hose can disconnect from the motor by itself and whip around uncontrollably.



- Turn off the compressed air before connecting to the motor.
- Securely connect the air hose to the motor.
- Turn on the compressed air.

### 5.4 Tool set up

The motor must be configured for the application.

## 6 First operation

### 6.1 Putting into use

The 22 series are rotary vane type motors. All motors feature durable construction with precision heavy-duty bearings throughout, and multiple blade rotors for smooth power. These motors require air line lubrication for long, trouble-free service. The 22 series motors perform satisfactorily in high temperature areas up to 200°F (93°C).

- Make sure the air line is clean and free of scale and dirt before connecting to the motor.
- Make sure all pipe fittings are securely tightened to prevent air leaks.
- Make sure the air supply is securely attached and the compressor is turned on.
- Make sure the output spindle is properly engaged with the application.
- Make sure all necessary guards are in place to protect operator from rotating mechanisms.

If an excessive amount of water is found in the air line, a water trap should be installed to trap as much as possible before it reaches the 22 series motor.

## 7 Troubleshooting

Malfunction	Possible causes	Remedy
Tool does not start	Improper air supply	→ Make sure there is adequate air pressure at the tool air inlet
	Motor dry from lack of lubrication	→ Check airline lubricator for proper function
	Broken gears	→ Tool disassembly required (parts replacement)
Tool runs slow and lacks torque	Improper air supply	→ Make sure there is adequate air pressure at the tool air inlet
	Motor dry from lack of lubrication	→ Check airline lubricator for proper function

## 8 Maintenance

CAUTION!



Danger of injury from accidental start up.  
Turn off the compressed air before performing any maintenance.

### 8.1 Service schedule

Only qualified and trained personnel are permitted to perform maintenance on these motors.

Regular maintenance reduces operating faults, repair costs and downtime. In addition to the following service schedule, implement a safety related maintenance program that takes the local regulations for repair and maintenance for all operating phases of the motor into account.

Maintenance Interval	Designation
Daily	<ul style="list-style-type: none"><li>→ Visual inspection of air supply hose and connections</li><li>→ Inspect airline filter, regulator and lubricator for proper operation</li><li>→ Check the tool for excessive vibration or unusual noises</li><li>→ Visual inspection of all external components of the tool</li></ul>
Weekly	<ul style="list-style-type: none"><li>→ Inspect the air hose for damage or wear</li><li>→ inspect the output spindle for damage or wear</li><li>→ Inspect the airline lubrication for proper function</li></ul>

### 8.2 Lubricants

For proper function and long service life, use of the correct lubricant is essential.

#### Oil identification

Use a light air tool oil, Cleco part number 500021. This oil is available from Apex Tool Group in the following quantities:

533484: 1 pint

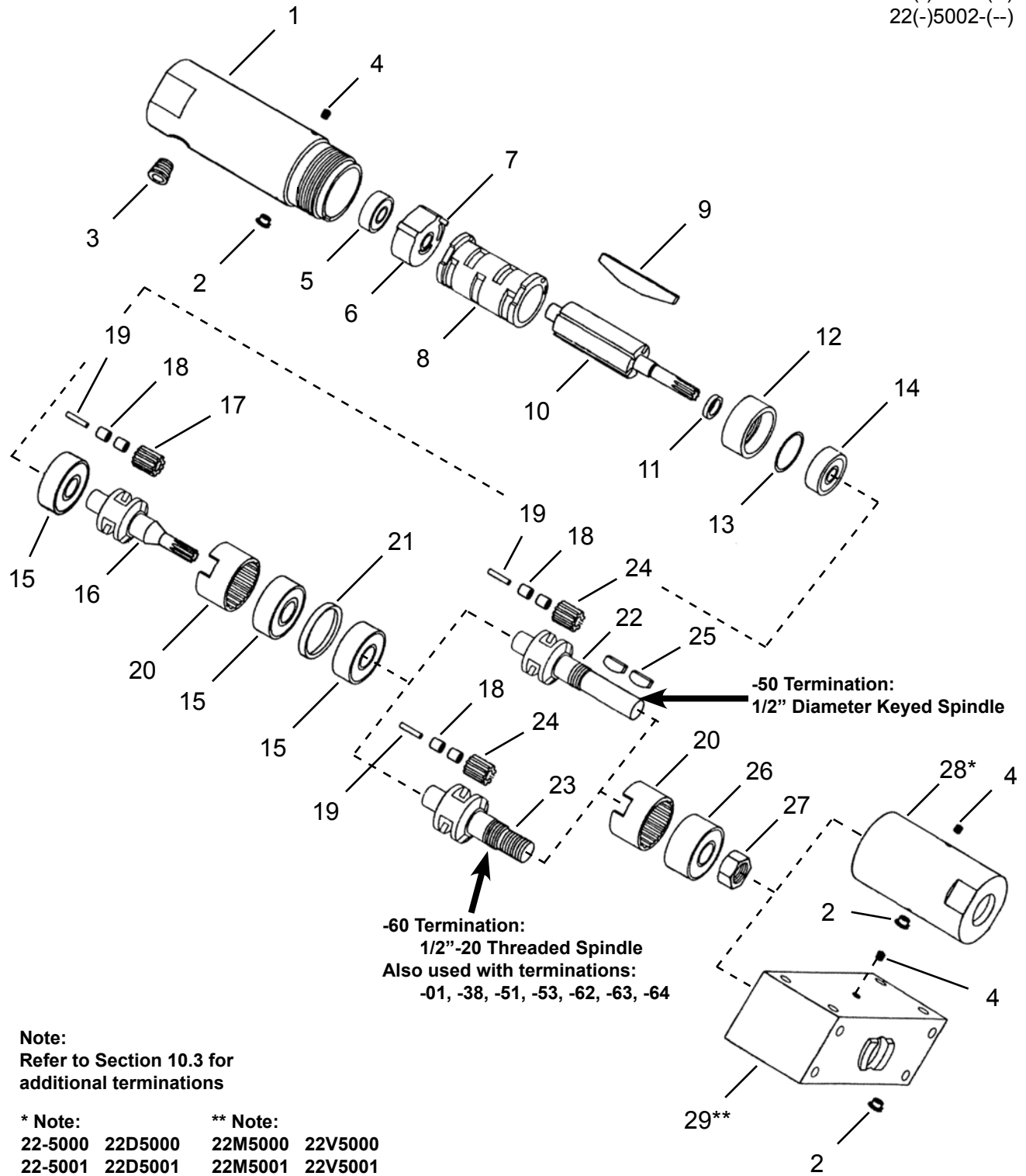
533485: 1 gallon

**DO NOT SUBSITUTE LUBRICANTS!**

**9 Repair instructions**

**10.1 22 Series - Side Exhaust Models**

**Models**  
22(-)5000(-)  
22(-)5001(-)  
22(-)5002(-)



**10.1 22 Series Side Exhaust Motors**

Ref	Number	#	X	EN
				Description
1	2896	1		Motor Housing (includes 1 Ref. 2)
2	1664	2	4	Grease Fitting
3	2957	1	2	Pipe Plug (1/4-18 NPTF)
4	2831	2	4	Set Screw (#10-32)
5	538PT	1	2	Ball Bearing
6	Table 10.1	1		Bearing Plate (includes Ref. 7)
7	1041	1	2	Pin
8	Table 10.1	1		Cylinder
9	2253PT	4	8	Rotor Blade
10	Table 10.1	1		Rotor (includes Ref. 11)
11	2017PT	1		Rotor Spacer
12	2508	1		Bearing Plate
13	2488PT	1	2	Shim Packet
14	500PT	1	2	Ball Bearing
15	556	3	6	Ball Bearing
16	Table 10.1	1		Planetary Gear Carrier
17	Table 10.1	2	4	Planetary Gear (includes 2 Ref. 18)
18	1464	8	16	Planetary Gear Needle Bearing
19	2509PT	4	8	Planetary Gear Shaft
20	2533PT	2		Ring Gear
21	2830	1		Bearing Spacer
22	2927	1		Planetary Gear Carrier (-50 Termination)
23	2513PT	1		Planetary Gear Carrier (-01, -62 Terminations)
	2864	1		Planetary Gear Carrier (-38, -51, -53, -60, -63, -64 Terminations)
24	Table 10.1	2	4	Planetary Gear (includes 2 Ref. 18)
25	613	2	4	Woodruff Key (-50 Termination)
26	557	1	2	Ball Bearing
27	2958	1	2	Lock Nut (-38, -50, -51, -53, -60, -63, -64 Terminations)
28	2893	1		Round Housing
29	2819PT	1		Flange and Base Mounting Housing
<b>Termination 60</b>				
--	14-0812	1	2	Wrench (3/4") (not shown)

(#) Quantity

(X) Recommended Spare Parts (quantity shown based on 1-5 tools in operation)

**Table 10.1**

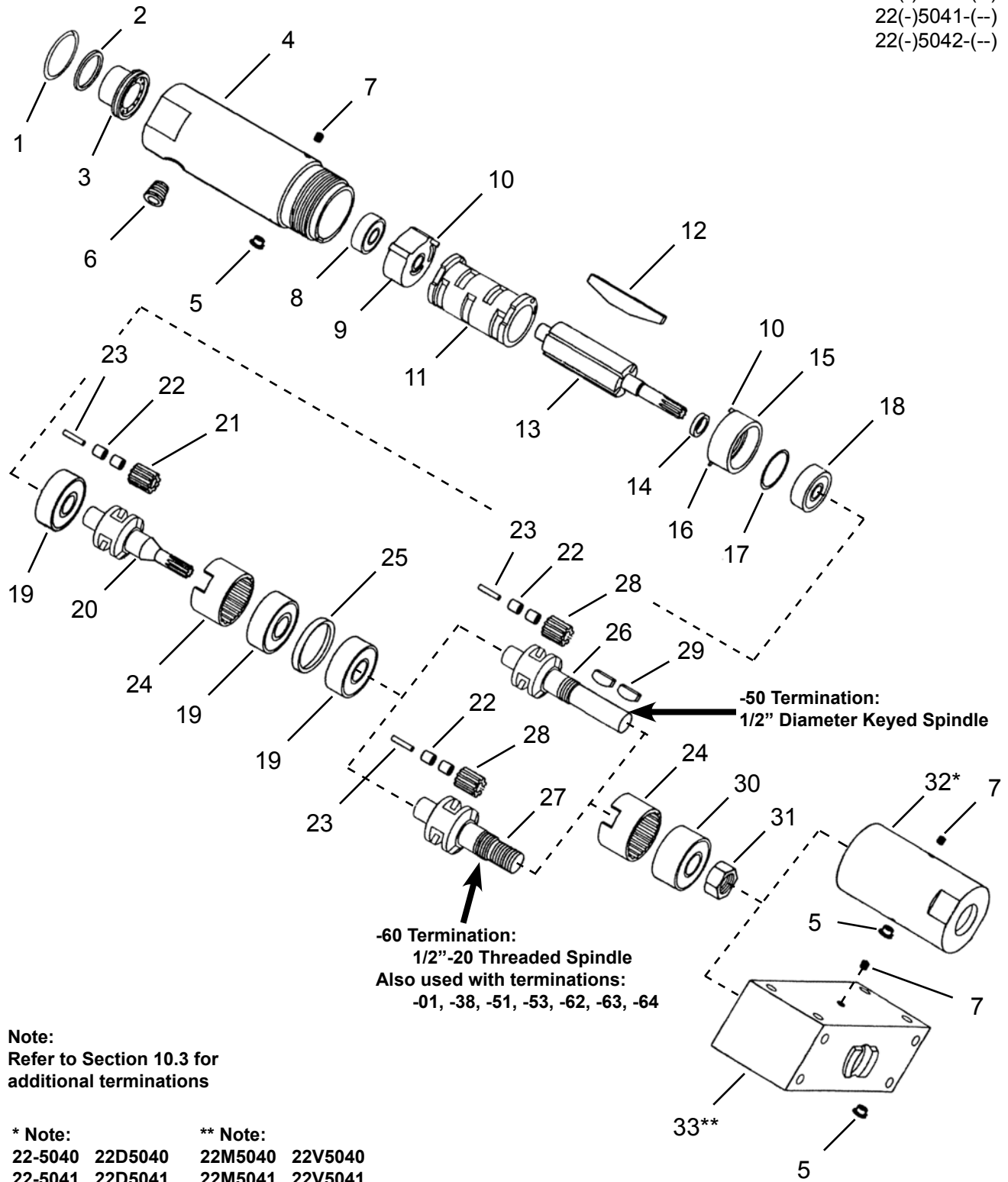
Ref.	Description	#	22-5000 22M5000	#	22-5001 22M5001	#	22-5002 22M5002	#	22D5000 22V5000	#	22D5001 22V5001	#	22D5002 22V5002
6	Bearing Plate	1	7404	1	7404	1	7404	1	7194PT	1	7194PT	1	7194PT
8	Cylinder	1	2255PT	1	2255PT	1	2255PT	1	2519PT	1	2519PT	1	2519PT
10	Rotor	1	7656S	1	7656S	1	7658PT	1	7656S	1	7656S	1	7658PT
16	Planetary Gear Carrier	1	2851	1	2848	1	2848	1	2851	1	2848	1	2848
17	Planetary Gear	2	2809PT (17T)	2	2809PT (17T)	2	2956 (15T)	2	2809PT (17T)	2	2809PT (17T)	2	2956 (15T)
24	Planetary Gear	2	2809PT (17T)	2	2956 (15T)	2	2956 (15T)	2	2809PT (17T)	2	2956 (15T)	2	2956 (15T)

(T) Teeth

**10.2 22 Series - Rear Exhaust Models**

**Models**

- 22(-)5040(-)
- 22(-)5041(-)
- 22(-)5042(-)



**Note:**  
Refer to Section 10.3 for additional terminations

<b>* Note:</b>		<b>** Note:</b>	
22-5040	22D5040	22M5040	22V5040
22-5041	22D5041	22M5041	22V5041
22-5042	22D5042	22M5042	22V5042



**10.2 22 Series Rear Exhaust Motors**

Ref	Number	#	X	EN
				Description
1	2690PT	1	3	Retaining Ring
2	1838PT	1	3	O-Ring
3	2685	1	3	Muffler
4	2897	1		Motor Housing (includes 1 Ref. 5)
5	1664	2	4	Grease Fitting
6	2957	1	2	Pipe Plug (1/4-18 NPTF)
7	2831	2	4	Set Screw (#10-32)
8	538PT	1	2	Ball Bearing
9	Table 10.2	1		Bearing Plate (includes 1 Ref. 10)
10	1041	2	4	Pin
11	Table 10.2	1		Cylinder
12	2253PT	4	8	Rotor Blade
13	Table 10.2	1		Rotor (includes Ref. 14)
14	2017PT	1		Rotor Spacer
15	Table 10.2	1		Bearing Plate (includes 1 Ref. 10 and Ref. 16)
16	2964	1	2	Pin
17	2488PT	1	2	Shim Packet
18	500PT	1	2	Ball Bearing
19	556	3	6	Ball Bearing
20	Table 10.2	1		Planetary Gear Carrier
21	Table 10.2	2	4	Planetary Gear (includes 2 Ref. 22)
22	1464	8	16	Planetary Gear Needle Bearing
23	2509PT	4	8	Planetary Gear Shaft
24	2533PT	2		Ring Gear
25	2830	1		Bearing Spacer
26	2927	1		Planetary Gear Carrier (-50 Termination)
27	2513PT	1		Planetary Gear Carrier (-01, -62 Terminations)
	2864	1		Planetary Gear Carrier (-38, -51, -53, -60, -63, -64 Terminations)
28	Table 10.2	2	4	Planetary Gear (includes 2 Ref. 18)
29	613	2	4	Woodruff Key (-50 Termination)
30	557	1	2	Ball Bearing
31	2958	1	2	Lock Nut (-38, -50, -51, -53, -60, -63, -64 Terminations)
32	2893	1		Round Housing
33	2819PT	1		Flange and Base Mounting Housing
<b>Termination 60</b>				
--	14-0812	1	2	Wrench (3/4") (not shown)

(#) Quantity

(X) Recommended Spare Parts (quantity shown based on 1-5 tools in operation)

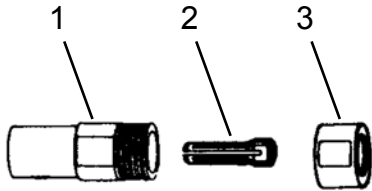
**Table 10.2**

Ref.	Description	#	22-5040 22M5040	#	22-5041 22M5041	#	22-5042 22M5042	#	22D5040 22V5040	#	22D5041 22V5041	#	22D5042 22V5042
9	Bearing Plate	1	7013PT	1	7013PT	1	7013PT	1	7198	1	7198	1	7198
11	Cylinder	1	2255PT	1	2255PT	1	2255PT	1	2519PT	1	2519PT	1	2519PT
13	Rotor	1	7656S	1	7656S	1	7658S	1	7656S	1	7656S	1	7658S
15	Bearing Plate	1	2959	1	2959	1	2959	1	2424	1	2424	1	2424
20	Planetary Gear Carrier	1	2851	1	2848	1	2848	1	2851	1	2848	1	2848
21	Planetary Gear	2	2809PT (17T)	2	2809PT (17T)	2	2956 (15T)	2	2809PT (17T)	2	2809PT (17T)	2	2956 (15T)
28	Planetary Gear	2	2809PT (17T)	2	2956 (15T)	2	2956 (15T)	2	2809PT (17T)	2	2956 (15T)	2	2956 (15T)

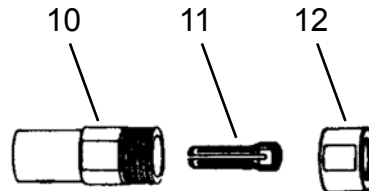
(T) Teeth

**10.3 22 Series - Motor Terminations**

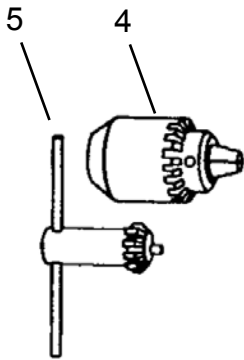
**Models**  
22(-)5000(-)  
22(-)5001(-)  
22(-)5002(-)  
22(-)5040(-)  
22(-)5041(-)  
22(-)5042(-)



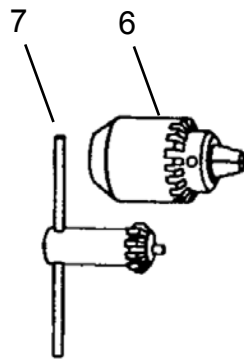
**-01 Termination: Series 200 Collet**



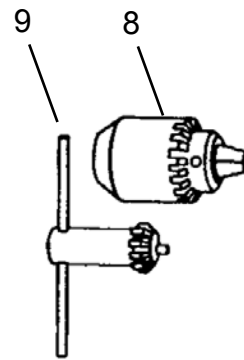
**-62 Termination: Series "K" Collet**



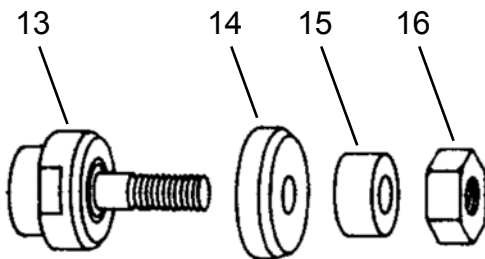
**-38 Termination: 1/4" Drill Chuck**



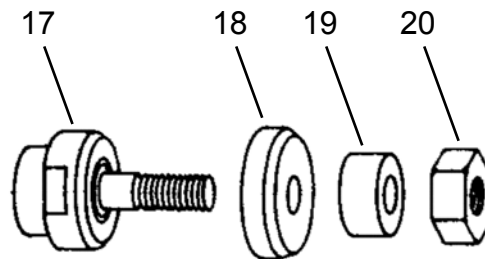
**-51 Termination: 3/8" Drill Chuck**



**-53 Termination: 1/2" Drill Chuck**



**-63 Termination: 4"x1"x.50" Polishing Wheel**



**-64 Termination: 8"x1"x.62" Polishing Wheel**

**10.3 22 Series Motor Terminations**

Ref	Number	#	X	EN
				Description
<b>Termination 01 - Series 200 Collet</b>				
1	2801PT	1	2	Collet Chuck Body
2	208	1	2	1/4" Collet
3	2058PT	1	2	Collet Cap
--	14-0809	1	2	Wrench (9/16") (not shown)
--	14-0812	1	2	Wrench (3/4") (not shown)
<b>Termination 38 - 0"-1/4" Drill Chuck Capacity</b>				
4	14-2545B	1	1	1/4" Chuck
5	14-2548	1	2	Chuck Key
<b>Termination 51 - 1/16"-3/8" Drill Chuck Capacity</b>				
6	14-2546	1	1	3/8" Chuck
7	14-2169	1	2	Chuck Key
<b>Termination 53 - 5/64"-1/2" Drill Chuck Capacity</b>				
8	14-2547	1	1	1/2" Chuck
9	14-2549	1	2	Chuck Key
<b>Termination 62 - Series "K" Collet</b>				
10	14-2254	1	2	Collet Chuck Body
11	124PT	1	2	1/4" Collet
12	4255PT	1	2	Collet Cap
--	14-0814	1	2	Wrench (7/8") (not shown)
--	14-0818	1	2	Wrench (1-1/8") (not shown)
<b>Termination 63 - 4" x 1" x .50" Polishing Wheel</b>				
13	14-2216	1	2	Wheel Adapter
14	14-4072	1	2	Wheel Flange
15	14-4082	1	2	Spacer
16	14-4073	1	2	Hex Nut
--	14-0814	1	2	Wrench (7/8") (not shown)
--	14-0836	1	2	Wrench (1-3/8") (not shown)
<b>Termination 64 - 8" x 1" x .62" Polishing Wheel</b>				
17	14-2212	1	2	Wheel Adapter
18	14-4045	1	2	Wheel Flange
19	14-4009	1	2	Spacer
20	14-4037	1	2	Hex Nut
--	14-0815	1	2	Wrench (15/16") (not shown)
--	14-0836	1	2	Wrench (1-3/8") (not shown)

(#) Quantity

(X) Recommended Spare Parts (quantity shown based on 1-5 tools in operation)

# 11 Technical data

## 11.1 22 Series Specifications

Model Number	Maximum Allowable RPM		Stall Torque		Weight		Overall Length		Air Consumption		Gear Ratio	Exhaust
	@ Max. HP	Free Speed	ft. lbs.	Nm	lbs.	kg	in.	mm	cfm	m3/min		
<b>Round Housing - Right Hand Rotation - See Termination Options</b>												
22-5000	215	430	41.2	55.83	4.2	1.91	7.94	202	29	0.82	50.4:1	Side
22-5040	215	430	41.2	55.83	4.1	1.86	7.94	202	29	0.82	50.4:1	Rear
22-5001	320	640	28.4	38.48	4.2	1.91	7.94	202	29	0.82	34.8:1	Side
22-5041	320	640	28.4	38.48	4.1	1.86	7.94	202	29	0.82	34.8:1	Rear
22-5002	470	940	19.6	26.56	4.2	1.91	7.94	202	29	0.82	24:1	Side
22-5042	470	940	19.6	26.56	4.1	1.86	7.94	202	29	0.82	24:1	Rear
<b>Round Housing - Left Hand Rotation - 1/2" Diameter Keyed Spindle (only)</b>												
22D5000-50	215	430	41.2	55.83	4.2	1.91	7.94	202	29	0.82	50.4:1	Side
22D5040-50	215	430	41.2	55.83	4.1	1.86	7.94	202	29	0.82	50.4:1	Rear
22D5001-50	320	640	28.4	38.48	4.2	1.91	7.94	202	29	0.82	34.8:1	Side
22D5041-50	320	640	28.4	38.48	4.1	1.86	7.94	202	29	0.82	34.8:1	Rear
22D5002-50	470	940	19.6	26.56	4.2	1.91	7.94	202	29	0.82	24:1	Side
22D5042-50	470	940	19.6	26.56	4.1	1.86	7.94	202	29	0.82	24:1	Rear
<b>Flange and Base Mounting - Right Hand Rotation - See Termination Options</b>												
22M5000	215	430	41.2	55.83	5.1	2.31	7.94	202	29	0.82	50.4:1	Side
22M5040	215	430	41.2	55.83	5.0	2.27	7.94	202	29	0.82	50.4:1	Rear
22M5001	320	640	28.4	38.48	5.1	2.31	7.94	202	29	0.82	34.8:1	Side
22M5041	320	640	28.4	38.48	5.0	2.27	7.94	202	29	0.82	34.8:1	Rear
22M5002	470	940	19.6	26.56	5.1	2.31	7.94	202	29	0.82	24:1	Side
22M5042	470	940	19.6	26.56	5.0	2.27	7.94	202	29	0.82	24:1	Rear
<b>Flange and Base Mounting - Left Hand Rotation - 1/2" Diameter Keyed Spindle (only)</b>												
22V5000-50	215	430	41.2	55.83	5.1	2.31	7.94	202	29	0.82	50.4:1	Side
22V5040-50	215	430	41.2	55.83	5.0	2.27	7.94	202	29	0.82	50.4:1	Rear
22V5001-50	320	640	28.4	38.48	5.1	2.31	7.94	202	29	0.82	34.8:1	Side
22V5041-50	320	640	28.4	38.48	5.0	2.27	7.94	202	29	0.82	34.8:1	Rear
22V5002-50	470	940	19.6	26.56	5.1	2.31	7.94	202	29	0.82	24:1	Side
22V5042-50	470	940	19.6	26.56	5.0	2.27	7.94	202	29	0.82	24:1	Rear

**Termination Options for Right Hand Rotation Models:**

- 01 Series 200 Collet Chuck (for milling and routing)
- 38 0"-1/4" Capacity Drill Chuck
- 50 1/2" Diameter Keyed Spindle
- 51 1/16"-3/8" Capacity Drill Chuck
- 53 5/64"-1/2" Capacity Drill Chuck
- 62 Series "K" Collet Chuck (for milling and routing)
- 63 4" x 1" x .50" Polishing Wheels
- 64 8" x 1" x .62" Polishing Wheels

## 12 Service

### 12.1 Replacement parts

**NOTE**



Use only original Cleco replacement parts. Failure to comply can result in reduced power and increased service requirements. The tool warranty may be voided if replacement parts are not manufactured or approved by Apex Tool Group.

### 12.2 Tool repairs

Only qualified and trained personnel are to repair this equipment.

### 12.3 Warranty repairs

All warranty repairs are to be performed by an authorized Apex Tool Group service center. Contact your local representative for assistance with warranty repair claims.

## 13 Disposal

---

**CAUTION!**



Injuries and environmental damage from improper disposal.

Components and auxiliary materials of the tool pose risks to health and the environment.

- Capture auxiliary materials (oils, greases) when drained and dispose of them properly.
- Separate the packaging components and dispose of them properly.
- Comply with all applicable local regulations.



Observe local disposal guidelines for all components of this tool and its packaging.

---





## Sales & Service Centers

**Note:** All locations may not service all products. Please contact the nearest Sales & Service Center for the appropriate facility to handle your service requirements.

Detroit, Michigan

**Apex Tool Group  
Sales & Service Center**  
2630 Superior Court  
Auburn Hills, MI 48326  
Tel: (248) 393-5640  
Fax: (248) 391-6295

Houston, Texas

**Apex Tool Group  
Sales & Service Center**  
6550 West Sam Houston  
Parkway North, Suite 200  
Houston, TX 77041  
Tel: (713) 849-2364  
Fax: (713) 849-2047

Lexington, South Carolina

**Apex Tool Group**  
670 Industrial Drive  
Lexington, SC 29072  
Tel: (800) 845-5629  
Tel: (803) 951-7544  
Fax: (803) 358-7681

Los Angeles, California

**Apex Tool Group  
Sales & Service Center**  
6881 Stanton Avenue  
Unit B  
Buena Park, CA 90621  
Tel: (714) 994-1491  
Fax: (714) 994-9576

Seattle, Washington

**Apex Tool Group  
Sales & Service Center**  
2865 152nd Avenue N.E.  
Redmond, WA 98052  
Tel: (425) 497-0476  
Fax: (425) 497-0496

York, Pennsylvania

**Apex Tool Group  
Sales & Service Center**  
3990 East Market Street  
York, PA 17402  
Tel: (717) 755-2933  
Fax: (717) 757-5063

Brazil

**Apex Tool Group  
Sales & Service Center**  
Av. Liberdade, 4055  
Zona Industrial - Iporanga  
18087-170 Sorocaba  
SP Brazil  
Tel: +55 15 2383929  
Fax: +55 15 2383260

Canada

**Apex Tool Group  
Sales & Service Center**  
7631 Bath Road  
Mississauga, Ont. L4T  
3T1  
Canada  
Tel: (866) 691-6212  
Tel: (905) 673-4400

China

**Cooper (China) Co., Ltd.**  
an Apex Tool Group, LLC  
company  
955 Sheng Li Road,  
Heqing Pudong, Shanghai  
China 201201  
Tel: +86-21-28994176  
Fax: +86-21-51118446

England

**Apex Tool Group  
GmbH & Co. OHG**  
C/O Spline Gauges  
Piccadilly, Tamworth  
Staffordshire B78 2ER  
United Kingdom  
Tel: +44 1827 8741 28  
Fax: +44 1827 8741 28

France

**Apex Tool Group S.N.C.**  
25 rue Maurice Chevalier  
B.P. 28  
77831 Ozoir-La-Ferrière  
Cedex, France  
Tel: +33 1 64 43 22 00  
Fax: +33 1 64 43 17 17

Germany

**Apex Tool Group  
GmbH & Co. OHG**  
Industriestraße 1  
73463 Westhausen  
Germany  
Tel: +49 (0) 73 63 81 0  
Fax: +49 (0) 73 63 81 222

Hungary

**Apex Tool Group  
Hungaria Kft**  
Platánfa u.2  
9027 Győr  
Hungary  
Tel: +36 96 66 1383  
Fax: +36 96 66 1135

India

**Apex Power Tools India  
Private Limited**  
Gala No. 1, Plot No. 5  
S. No. 234, 235 & 245  
Indialand Global  
Industrial Park  
Taluka-Mulsi, Phase I  
Hinjawadi, Pune 411057  
Maharashtra, India

Mexico

**Apex Tool Group México  
S. de R.L. de C.V.**  
Vialidad El Pueblito #103  
Parque Industrial Querétaro  
Querétaro, QRO 76220  
Mexico  
Tel: +52 (442) 211-3800  
Fax: +52 (442) 103-0443

Apex Tool Group, LLC  
1000 Lufkin Road  
Apex, NC 27539  
Phone: 919-387-0099  
Fax: 919-387-2614  
www.apextoolgroup.com

# Cleco®